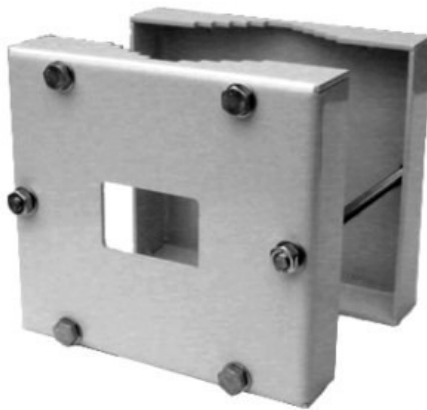




### SP/B Pole adaptor



□ **Pole adaptor  
(SP/B)**

Zinc metal, polyester powder coated RAL 7035 (*light grey*)

Stainless steel bolts and screws

This pole mount adaptor allows two housing brackets to be installed. Suitable for poles having a diameter between 50 mm. and 140 mm., it offers outstanding stability and is also equipped with a central hole for the passage of the cables.

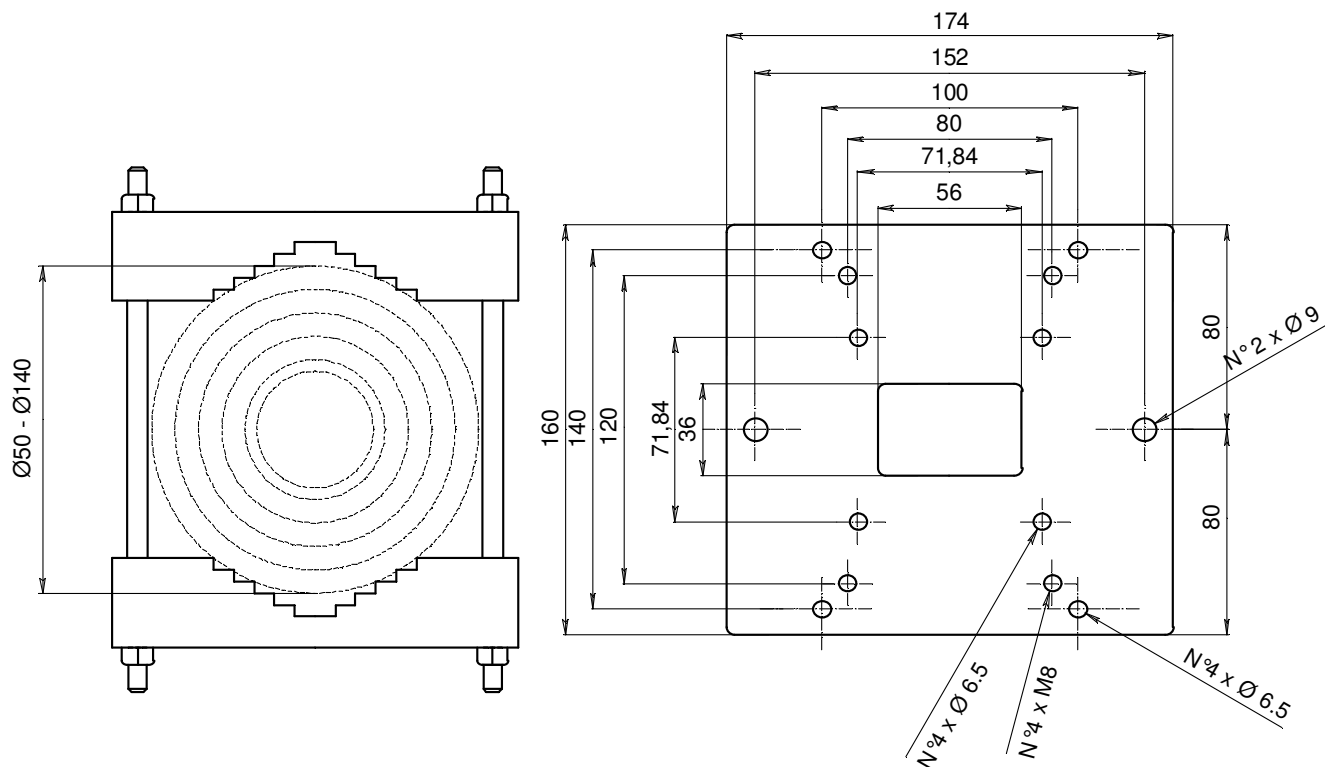
Weight: 2,5 kg.

25 kg. load rating

# SP/B

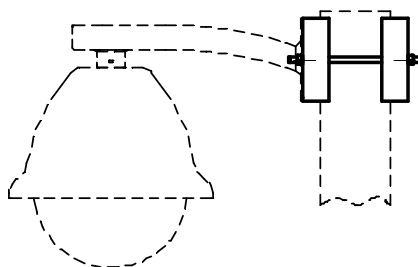
# - DATA SHEET -

## pole adaptor



the values are in millimeters

### example of installation



Specifications are subject to change without notice, weights and dimensions are indicative.

**GLOBAL PROOF S.r.l.**

Via dell'Industria, 10 36013 Piovane Rocchette (VICENZA) ITALY  
Phone +39.0445.396190 Fax +39.0445.395000

[info@globalproof.it](mailto:info@globalproof.it)

[www.globalproof.it](http://www.globalproof.it)